

S.I.L. NO. 05-560-01

SERVICE INFORMATION LETTER

FROM: JetProp LLC

6 April 2005

SUBJECT: Fuel Pressure Switch

Applicability: PA-46-350P aircraft modified in accordance with STC ST00541SE to the JetProp configuration prior to JetProp number 151.

The JetProp was originally certified without a fuel pressure annunciator. However, several customers have requested adding the "Fuel Pressure" annunciator. Therefore, starting with JetProp number 151 all PA-46-350P aircraft have a fuel pressure switch installed and connected to the "Fuel Pressure" annunciator. This upgrade can be accomplished on PA-46-350P JetProp aircraft 1-150 with the "Fuel Pressure" annunciator as follows:

1. Remove the top cowling.
2. Locate the fuel pressure transducer located on the right side of the engine mount and attached to two tabs on the engine mount (See Figure 1).

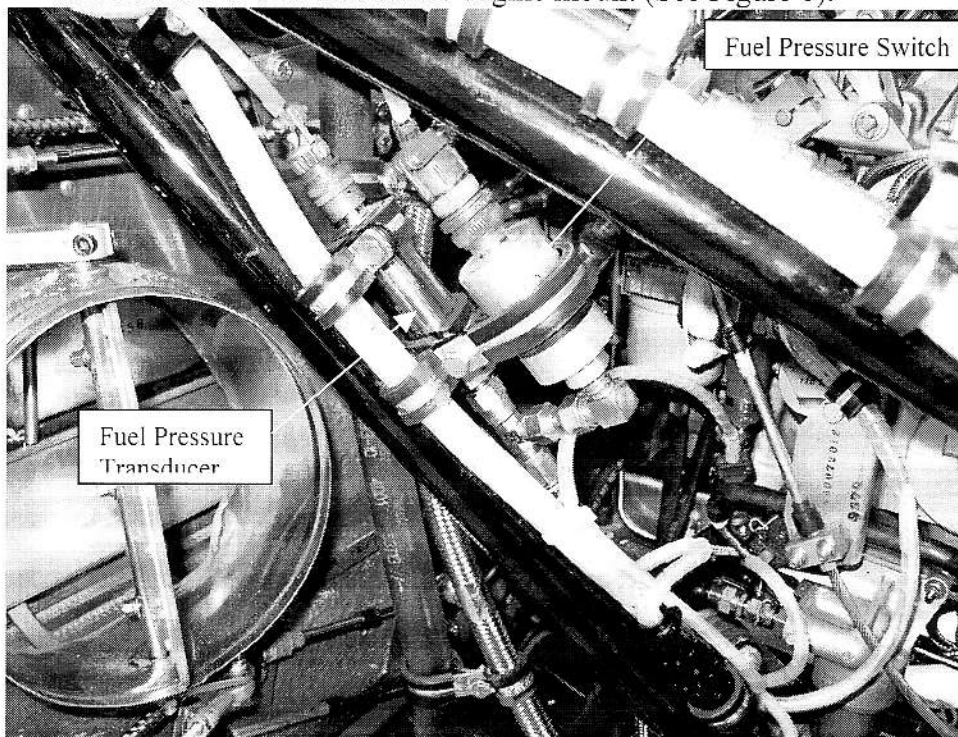


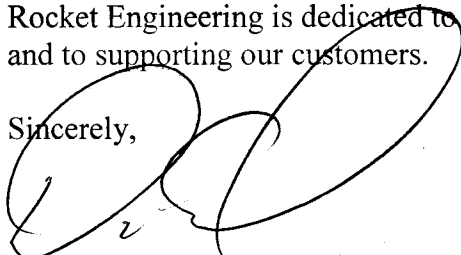
Figure 1. Fuel Pressure Switch Installation

3. Disconnect the fuel line at the fuel pressure transducer and install a tee and the hardware and fuel pressure switch as shown in Figure 1 and Drawing 560.08.600 Rev E (Attachment 1).
4. The wiring for the "Fuel Pressure" annunciator is in accordance with the original Piper electrical schematics. (The electrical connections are the same even though the fuel pressure switch has been relocated.) In 1996 Piper changed the bulkhead fitting so there are two different schematics for the different years attached. Refer to the appropriate electrical schematic attached to this service letter.
5. Route wire Q14B20 from the fuel pressure switch through the firewall to connector P402. Connector P402 is located in the forward baggage compartment approximately 12 inches to the right side of centerline at the top of the pressure bulkhead. (The interior of the forward baggage compartment will have to be removed to gain access to the connector.) Wire Q14B20 will go to pin k "little k" (SN 4636021 and up) or pin 4 (all others) in connector P402.
6. Route wire Q14A20N from the fuel pressure switch to the engine ground block located on the upper right corner of the firewall.
7. Check that the wire and the pressure switch are secure.
8. Perform a functional check and leak check. With battery power "on" the "Fuel Pressure" annunciator should be illuminated. Turn one of the header tank fuel pumps on and check that the fuel pressure on the fuel pressure gauge is indicating approximately 20 psi and that the "Fuel Pressure" annunciator is no longer illuminated. Check for any leaks around the fuel pressure switch and transducer.
9. After satisfactorily passing the functional and leak checks in step 8, turn the header tank pump and batteries off.
10. Install the forward baggage compartment interior and the top cowling.
11. Make a logbook entry reflecting that JetProp Service Letter 05-560-01 has been complied with.

If there are any questions, please contact Rich Runyon in Engineering or Curtis Vandegriffe the chief of maintenance at (509) 535-4401.

Rocket Engineering is dedicated to continuing to improve the JetProp DLX Conversion and to supporting our customers.

Sincerely,



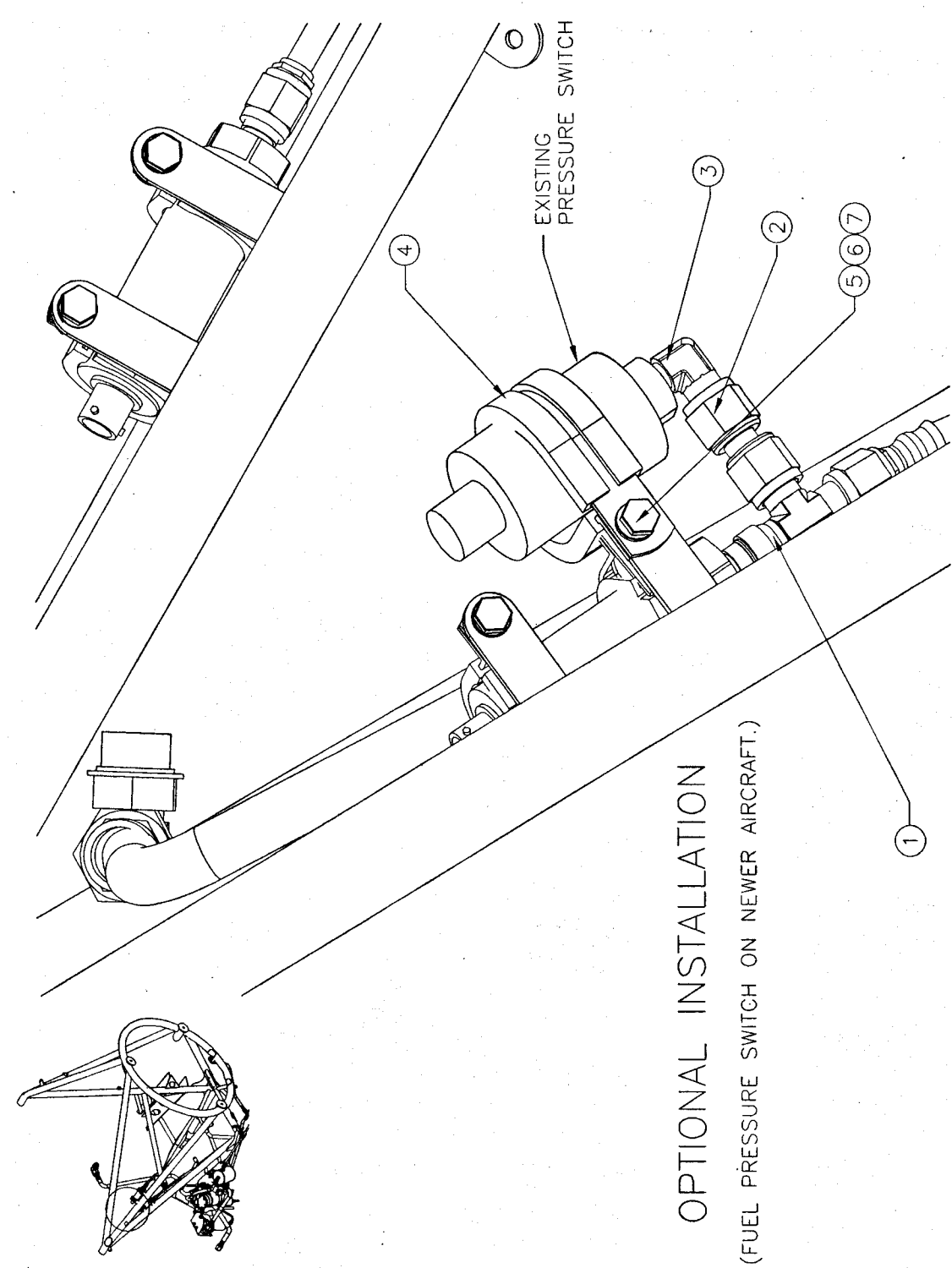
Darwin C. Conrad
President
JetPROP, LLC

Attachments

1. Drawing 560.08.600
2. Piper Schematics 91-28-20
3. Fuel Pressure Annunciator Upgrade Kit Part Listing

REVISION DESCRIPTION

▲UPDATED FITTINGS
 ▲ADDED PRESURE SWITCH
 ▲CORRECTED B.O.M.
 ▲CHANGED ASSEMBLY DRAWING.
 ▲ADDED DRAWING FOR PRESSURE SW.



OPTIONAL INSTALLATION
 (FUEL PRESSURE SWITCH ON NEWER AIRCRAFT.)

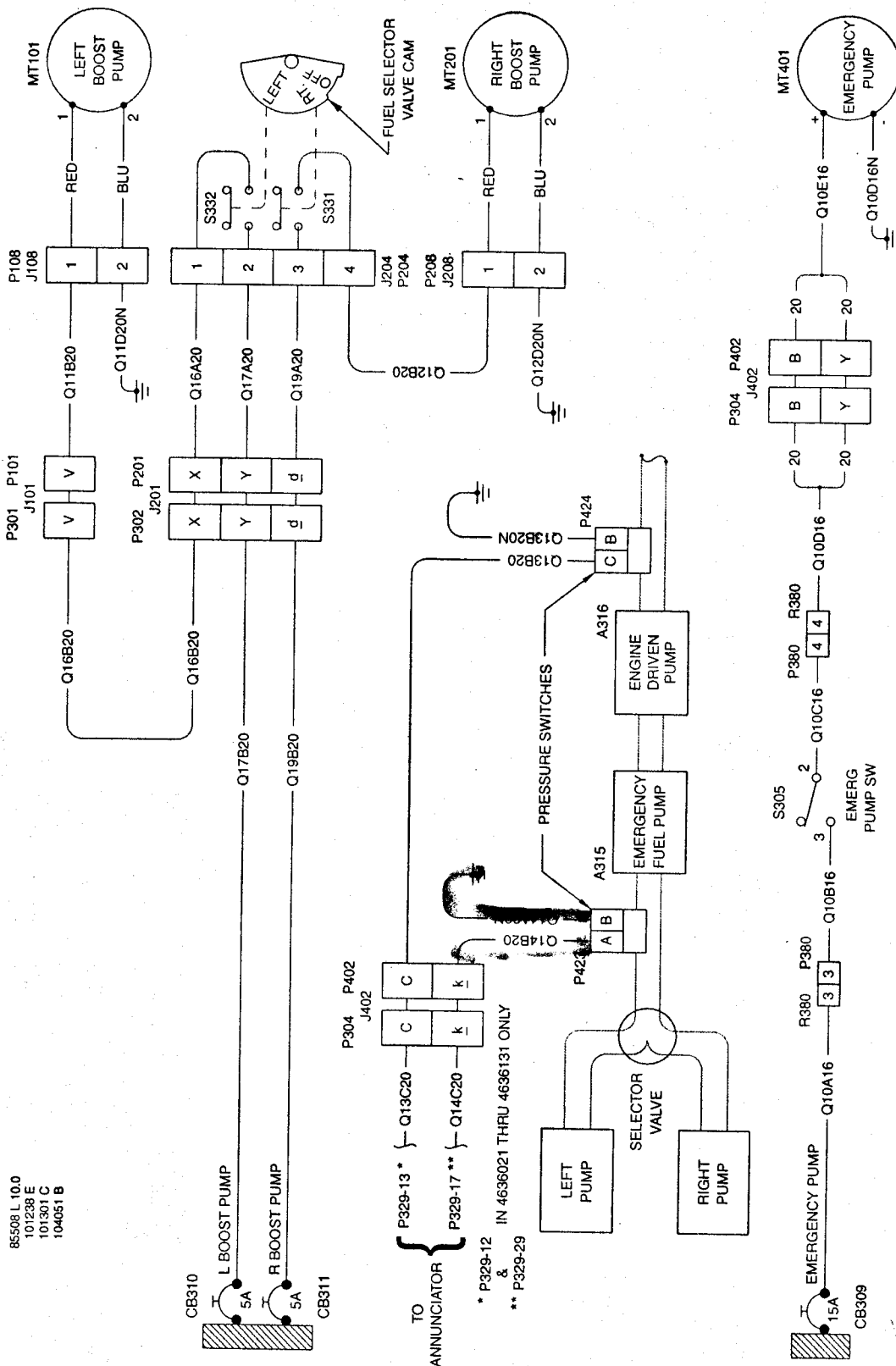
ITEM	QTY	PART NO.	DESCRIPTION
7	2	ANS60-10	WASHER
6	1	ANS-11A	BOLT
5	1	MS21045-3	NUT
4	1	MS21919M022	ADJL CLAMP
3	1	2501-4-2	90° FITTING
2	1	6665-4-4	UNION
1	1	6802-4-4-4	TEE W/SHVEL

BILL OF MATERIALS		SCALE:	SIZE:	REVISION
		NTS	B	FOR DESCRIPTION OF CHANGE - SEE ABOVE
		UNLESS OTHERWISE SPECIFIED ALL DIMENSIONS ARE IN INCHES		
		TOLERANCES:		
		X ±.10	XX ±.030	LR ECO BY DATE CHK
		.XXX ±.005	±.1	A 601 RD 9/98 PA
		REMOVE BURRS AND SHARP EDGES		
		BY	DATE	B 692 RD 2/99 PA
		DRAWN	R. DRAPER	6/00
		CHECKED	<i>RD</i>	7/05
		APPROV'D	<i>RD</i>	7/05
		FAA APPL		
		ROCKET ENGINEERING CORPORATION		
		PROJECT: JetPROP DLX		
		DRAWING TITLE: EPA SYSTEM INSTALLATION		
		SHEET 3 OF 3		
		DRAWING NUMBER: 560.08.600		
		REV. E		

P/N	NEXT ASSY.	USED ON	QTY.
-	-	-	-

CONFIDENTIAL: THIS DRAWING AND ALL INCLUDED INFORMATION IS THE PROPERTY OF ROCKET ENGINEERING CORPORATION AND IS NOT TO BE USED IN ANY FORM WITHOUT EXPRESS AUTHORIZATION OF SAME.

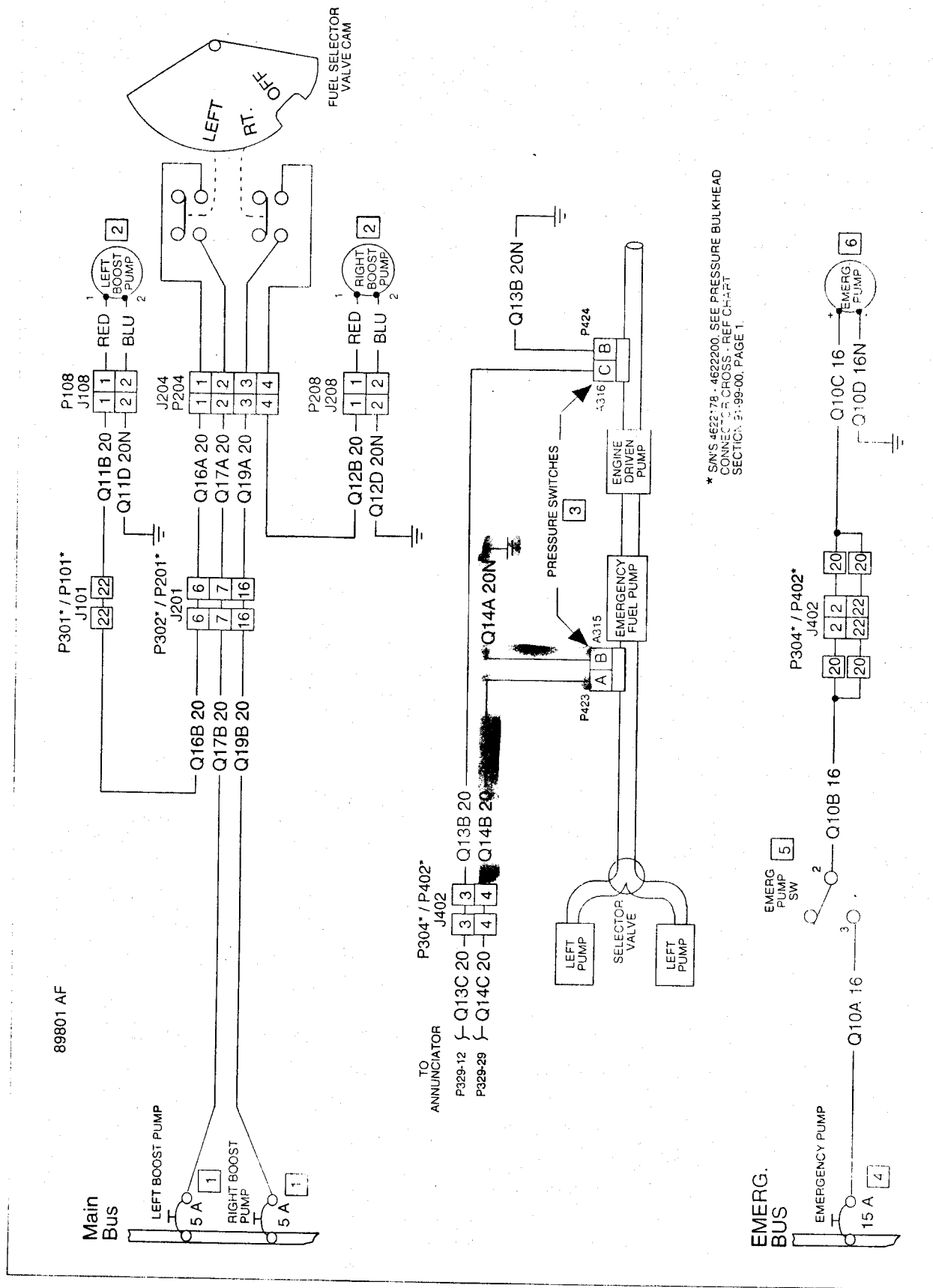
THE NEW PIPER AIRCRAFT, INC.
PA-46-350P, MALIBU MIRAGE
MAINTENANCE MANUAL



Fuel Pumps
Figure 2 (Sheet 2 of 2)

Effectivity
4636021 and up

PIPER AIRCRAFT
PA-46-310P / 350P
MAINTENANCE MANUAL



Fuel Pressure Annunciator Upgrade Kit Part Listing

Quantity	Part Number	Description
1	6602-4-4-4	Tee
1	6565-4-4	Union
1	2501-4-2	90 ⁰ Fitting
1	MS21919WDG22	Adel Clamp
1	MS21045-3	Nut
1	AN3-11A	Bolt
1	6607A	Fuel Pressure Switch
1	NA	Cannon Plug and wire harness